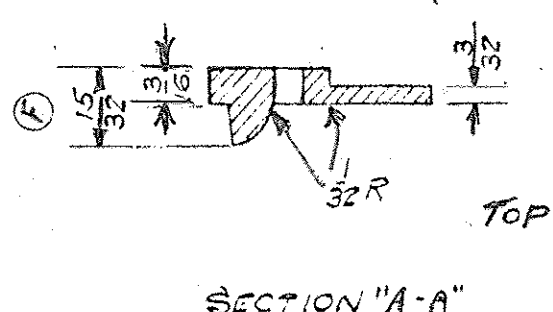
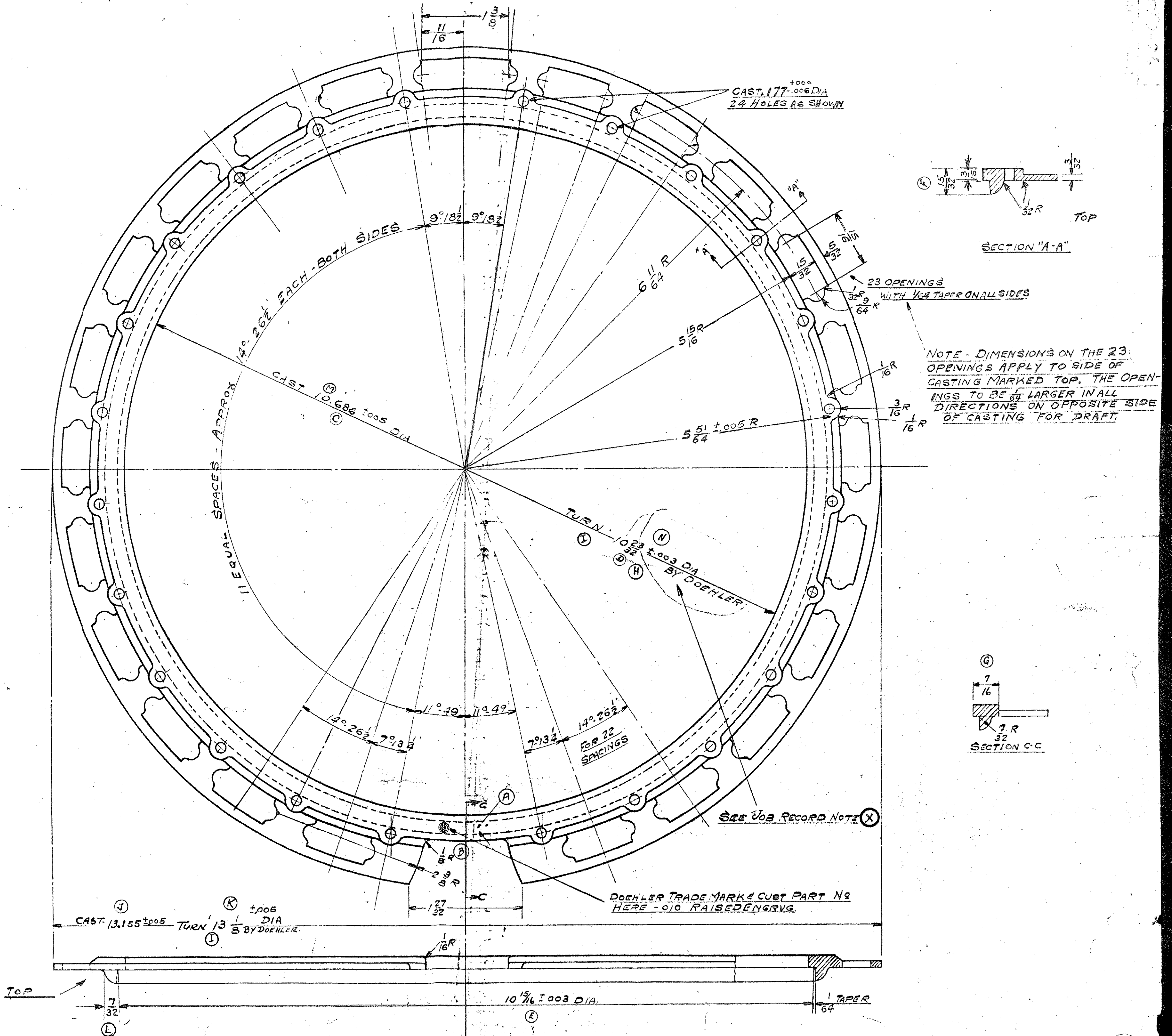


IMPORTANT NOTE!

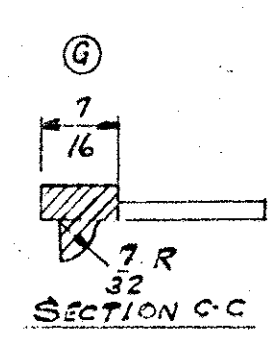
DIMENSIONS FOR WHICH TOLERANCES ARE GIVEN ARE CONSIDERED IMPORTANT AND WILL BE INSPECTED BY U.S. ALL OTHER DIMENSIONS FOR WHICH NO TOLERANCES ARE GIVEN ARE CONSIDERED UNIMPORTANT AND WILL BE HELD TO SCALE SIZE ONLY.

PRODUCTION PRINT	TOLEDO PLANT	BREAK GATE	A	SLOT REMOVED	H	WAS 10 23 22 ± .005
CUSTOMER NO.	ZINC	NON-F	B	MAS 10 26 6	J	WAS 8 CAST
DATE	11/28/58	DATE	C	MAS 10 26 6	K	MACH OPER APPROVED
BY	4731 SIN	BY	D	MAS 10 23 2	L	WAS 7/16
BY		BY	E	MAS 11 2 000	M	WAS 10 10 10 3
BY		BY	F	MAS 13 32	N	WAS 10 23 22 ± .005
BY		BY	G	MAS 13 32		

GIBSON INC.



NOTE - DIMENSIONS ON THE 23 OPENINGS APPLY TO SIDE OF CASTING MARKED TOP, THE OPENINGS TO BE LARGER IN ALL DIRECTIONS ON OPPOSITE SIDE OF CASTING FOR DRAFT.



NOTE: POLISHED & PLATED BY CUST